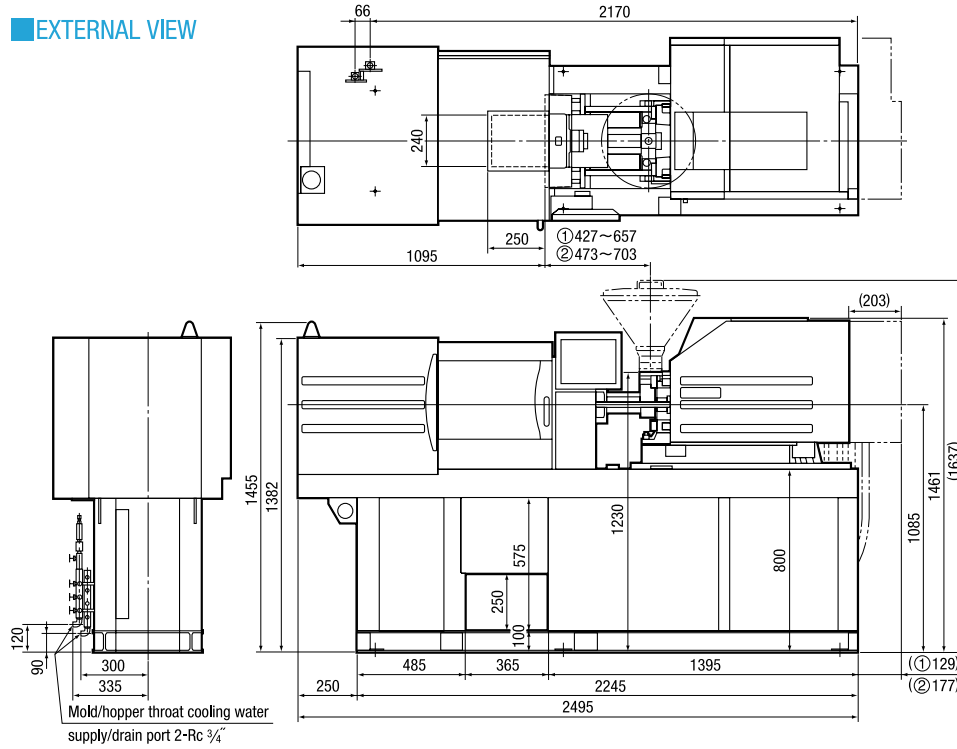


NEX15

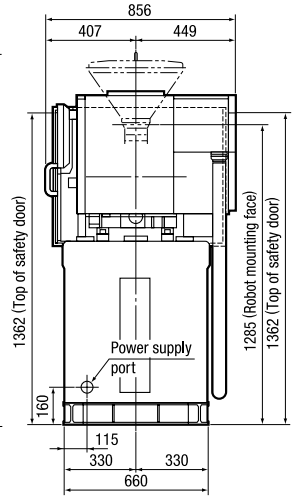
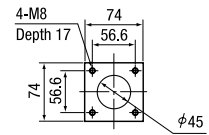
Injection type : 1E [Screw diameter : ① $\phi 16$ / ② $\phi 19$]

EXTERNAL VIEW

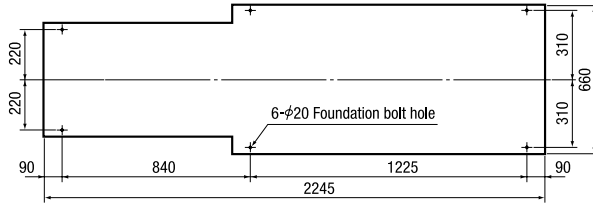


HOPPER FIXATION DIAGRAM

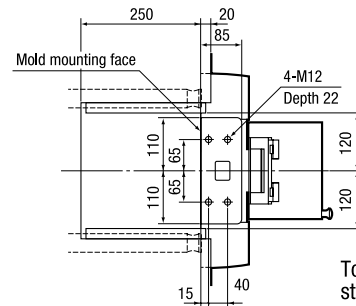
* For more details, please refer to the "hopper installation diagram."



FOUNDATION DIAGRAM

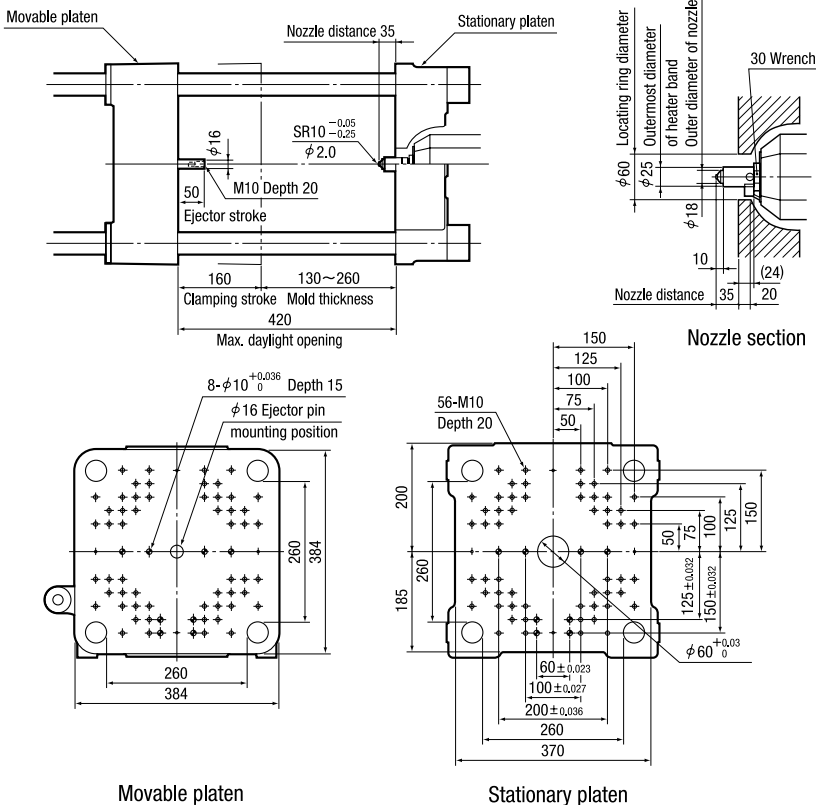


ROBOT FIXATION DIAGRAM

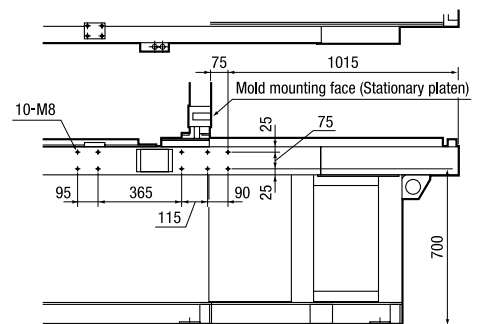
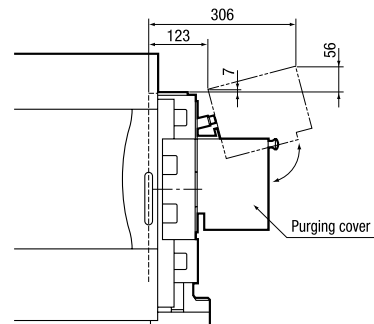


MOLD ATTACHMENT DIAGRAM

*The minimum mold dimensions of 180mm (H) x 180mm (V) are required in order to achieve the maximum clamping force.



Top face of stationary platen



Non-operation side (for side entry robot)